



14

B

11



**DRESS ENGINEERING**  
 FITTING  
 CONSTRUCTION

**TRUNK SKIRTS BY CONSTRUCTION**  
 DRESS ENGINEERING  
 FITTING  
 CONSTRUCTION

15

16

**CONSTRUCTION**  
 FITTING  
 CONSTRUCTION

**CONSTRUCTION**  
 FITTING  
 CONSTRUCTION

17

18

19

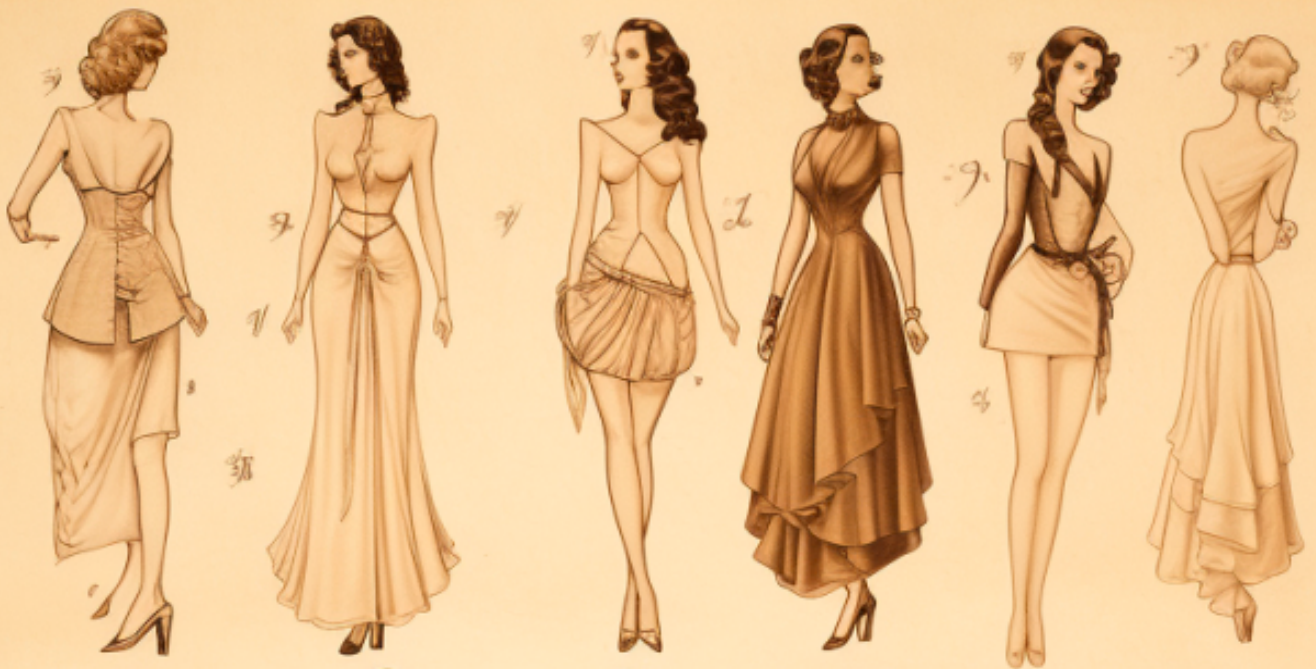
20

y

z

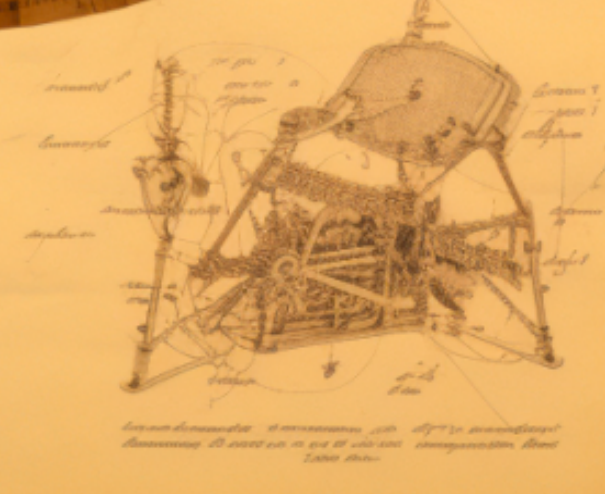
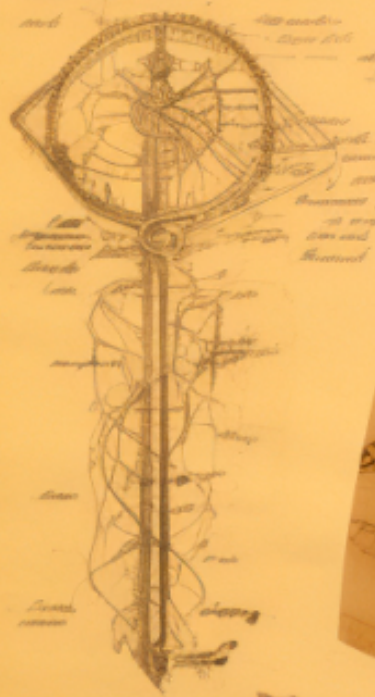
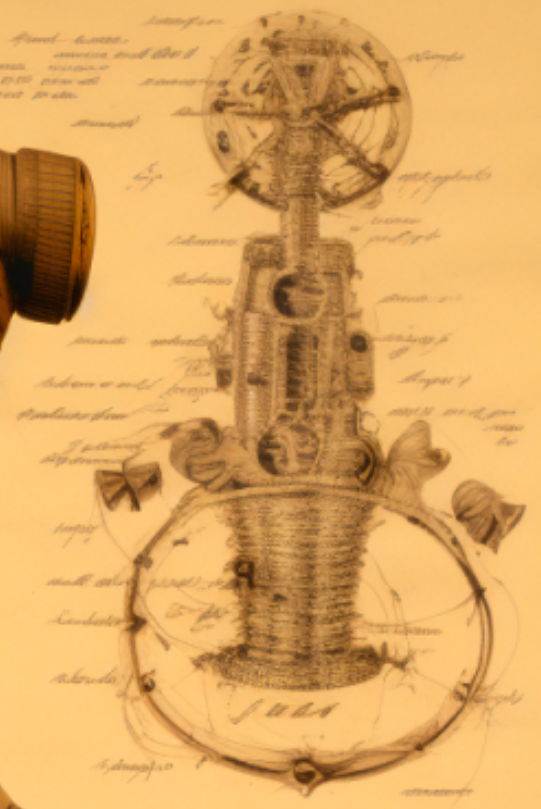
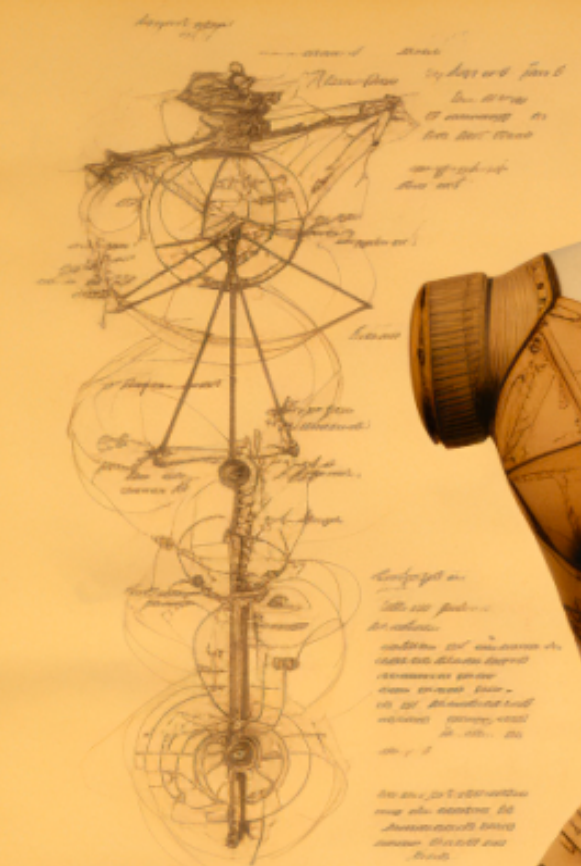
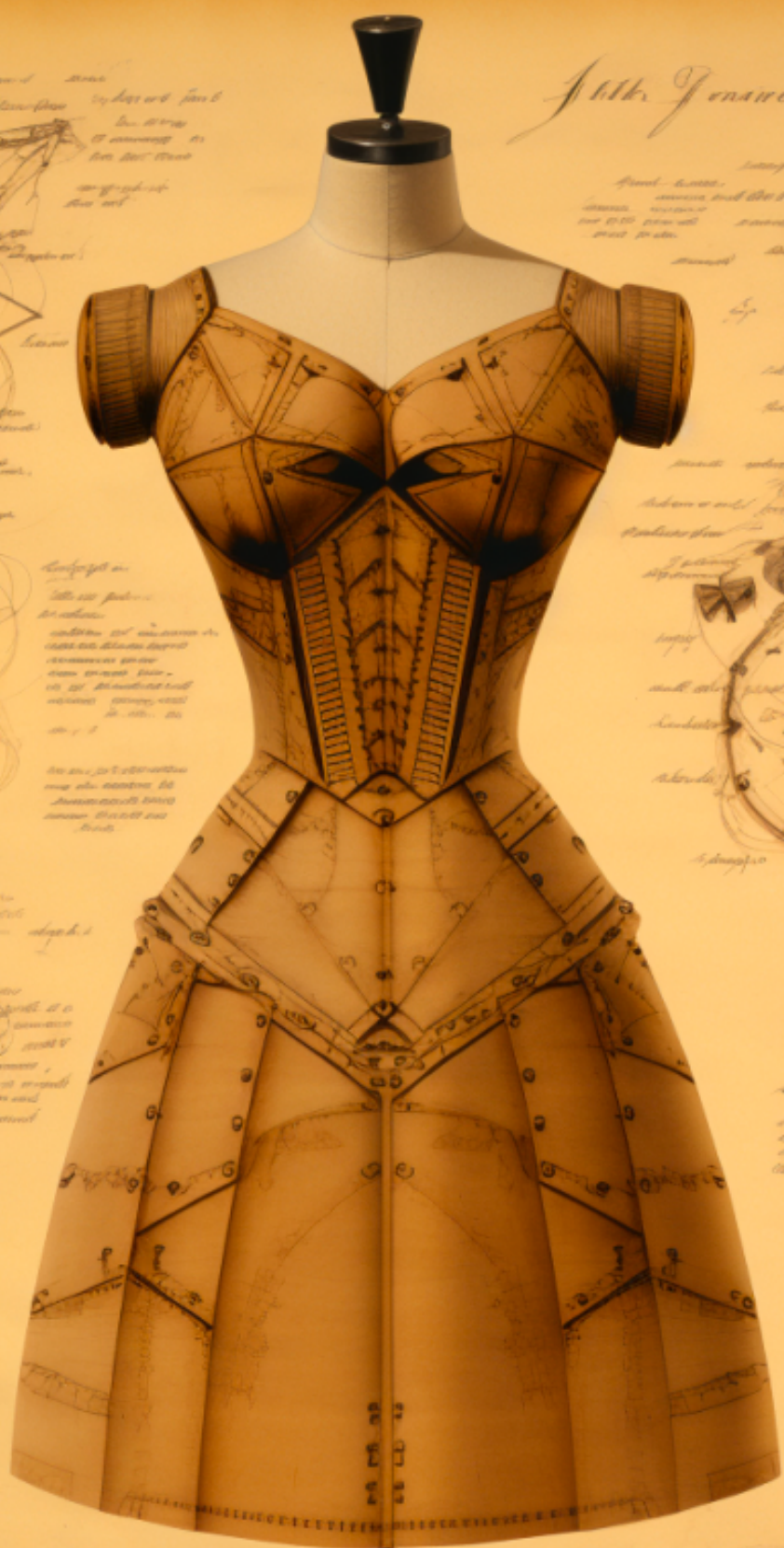
b







# 11th. Genre First Pol. 1888





























*Allegro*























*Home of the finest of fabrics*

*Richard*

























W. H. & O. Co.  
1870





































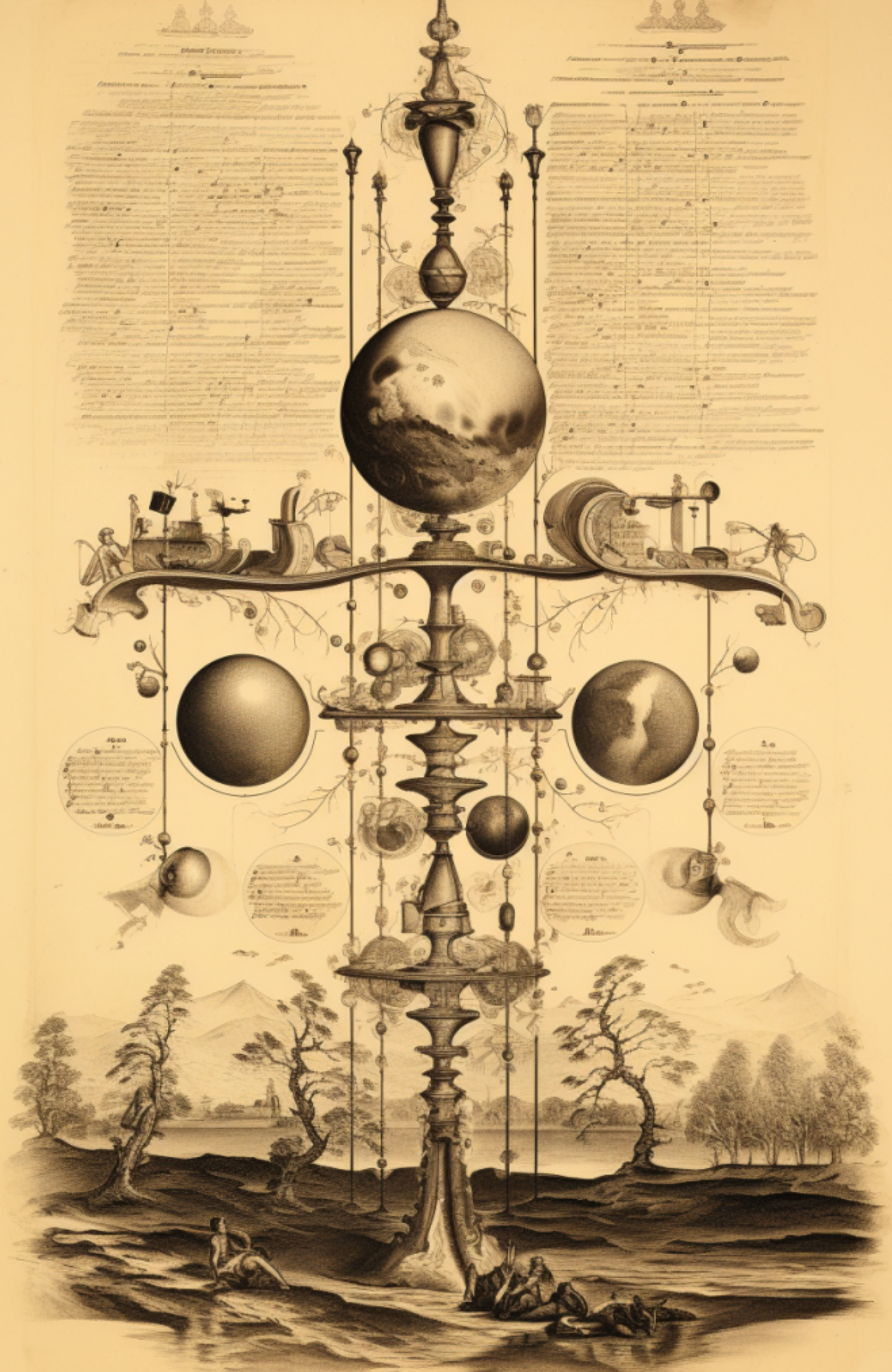














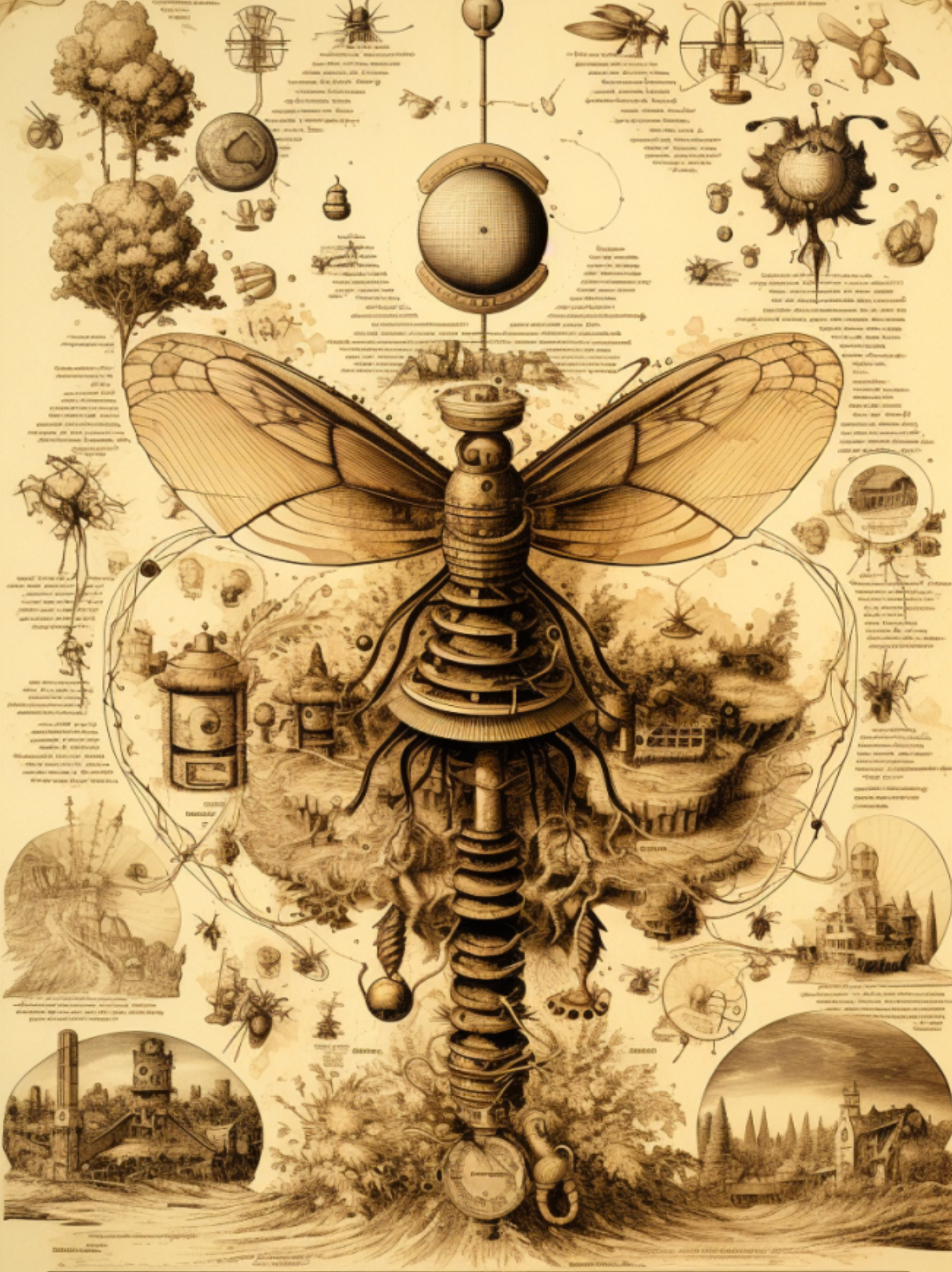




ВНИМАТЕЛЬНО ИЗУЧИТЕ ЭТО ПЕРВОЕ

СРЕДСТВО

ПРОТИВ ВРЕДНЫХ НАСЕКОМЫХ



ВНИМАТЕЛЬНО ИЗУЧИТЕ ЭТО ПЕРВОЕ СРЕДСТВО ПРОТИВ ВРЕДНЫХ НАСЕКОМЫХ

ВНИМАТЕЛЬНО ИЗУЧИТЕ ЭТО ПЕРВОЕ СРЕДСТВО ПРОТИВ ВРЕДНЫХ НАСЕКОМЫХ. ВНИМАТЕЛЬНО ИЗУЧИТЕ ЭТО ПЕРВОЕ СРЕДСТВО ПРОТИВ ВРЕДНЫХ НАСЕКОМЫХ. ВНИМАТЕЛЬНО ИЗУЧИТЕ ЭТО ПЕРВОЕ СРЕДСТВО ПРОТИВ ВРЕДНЫХ НАСЕКОМЫХ.



ВНИМАТЕЛЬНО ИЗУЧИТЕ ЭТО ПЕРВОЕ СРЕДСТВО ПРОТИВ ВРЕДНЫХ НАСЕКОМЫХ. ВНИМАТЕЛЬНО ИЗУЧИТЕ ЭТО ПЕРВОЕ СРЕДСТВО ПРОТИВ ВРЕДНЫХ НАСЕКОМЫХ. ВНИМАТЕЛЬНО ИЗУЧИТЕ ЭТО ПЕРВОЕ СРЕДСТВО ПРОТИВ ВРЕДНЫХ НАСЕКОМЫХ.



ВНИМАТЕЛЬНО ИЗУЧИТЕ ЭТО ПЕРВОЕ СРЕДСТВО ПРОТИВ ВРЕДНЫХ НАСЕКОМЫХ. ВНИМАТЕЛЬНО ИЗУЧИТЕ ЭТО ПЕРВОЕ СРЕДСТВО ПРОТИВ ВРЕДНЫХ НАСЕКОМЫХ. ВНИМАТЕЛЬНО ИЗУЧИТЕ ЭТО ПЕРВОЕ СРЕДСТВО ПРОТИВ ВРЕДНЫХ НАСЕКОМЫХ.



Illustrazione di un aereo con motore a vapore, con elica e eliche, e un aereo con elica e eliche.

Illustrazione di un aereo con motore a vapore, con elica e eliche, e un aereo con elica e eliche.



Illustrazione di un aereo con motore a vapore, con elica e eliche, e un aereo con elica e eliche.



Illustrazione di un aereo con motore a vapore, con elica e eliche, e un aereo con elica e eliche.

Illustrazione di un aereo con motore a vapore, con elica e eliche, e un aereo con elica e eliche.



Illustrazione di un aereo con motore a vapore, con elica e eliche, e un aereo con elica e eliche.

Illustrazione di un aereo con motore a vapore, con elica e eliche, e un aereo con elica e eliche.

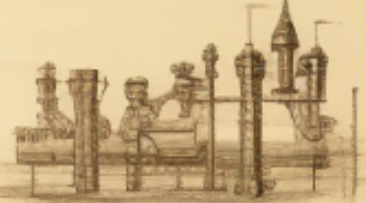


Illustrazione di un aereo con motore a vapore, con elica e eliche, e un aereo con elica e eliche.

Illustrazione di un aereo con motore a vapore, con elica e eliche, e un aereo con elica e eliche.

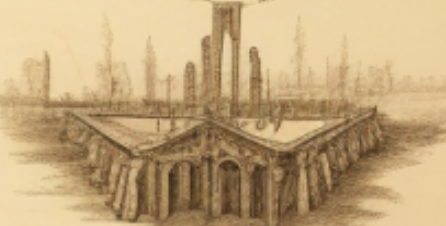


Illustrazione di un aereo con motore a vapore, con elica e eliche, e un aereo con elica e eliche.

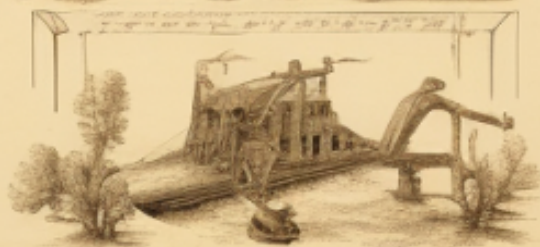


Illustrazione di un aereo con motore a vapore, con elica e eliche, e un aereo con elica e eliche.

Illustrazione di un aereo con motore a vapore, con elica e eliche, e un aereo con elica e eliche.



**ONE CLAW**

SENIT PARIDE  
JUNIA FIBBIS  
SHEET IV

88 **276**

**THE GEMADE LBLE GULLS**

**SENIT PARIDE**  
24 - H-4 8882 861 - 14

NEW YORK BY SHIRAZ  
SOUTH. GREENHUR. DOWM. SHAK. LES. WOOD.

**506**

**JRUNNUN\_BRAL**

165 **WES**

**TUBRALEOT MDILE**

**DRICOESNAIE**  
ZAY "I"

84 **306**

**QJVEN ROHET**  
DPUM.

**6 31**

**AMAT LANGOBB**

**RAMFAN ORL**

**NOPGET CRIA.**  
EORAC COLAR. Q. R. 31112

**FO.2 009 ACD 166**

**TOIVER FAGLSA**

**JHNIAL. 3000**

2 00 88 **06**

**ISTITAN BALUTIN**

**7.6.7**

**BANGNELED BAPORHANG**

**3 1.6**









1897





























*Faint handwritten text, likely lyrics or notes.*

*Faint handwritten text, likely lyrics or notes.*

*Faint printed text, possibly a title or section header.*

*Faint handwritten text, likely lyrics or notes.*



**TAX**

*Faint handwritten text at the bottom right of the page.*





*Handwritten text in cursive script, partially obscured by the illustration's border.*



*Handwritten text in cursive script, including the name 'Mason' at the bottom.*



*Handwritten text in cursive script, appearing as bleed-through from the reverse side of the page.*



*Handwritten text in cursive script at the bottom of the page, including a signature.*



# Childe & Cornemets

## Coro fra



*Childe & Cornemets*  
 Editeurs 17, rue de la Harpe, Paris



*Childe & Cornemets*  
 Editeurs 17, rue de la Harpe, Paris







Processes governed by natural  
laws - statements of which  
apply equally to plants and  
animals began at dawn of life  
and continue as long as life exists  
impossible to understand  
at present.

Real world exists only in  
which can be appreciated by  
physical laws has to do with  
study of which is beyond  
science.  
was formerly thought  
to be - now known



Miunsi facio fidem Ego Raphael Batlla Apo-  
tolica, et Regia Auctoritatibus Illiusq. et Adm  
Reuerendi Vni Prioris Ecclesie Collegiate, et  
Secularis Beatæ Mariæ Villæ de la Fontevic. Bi-  
nalduni dios. Gerunden. not. publicus dicte Villæ,  
dominusq. Vtilis et proprietarius Notarie pub-  
licæ dicte Villæ de la Fontevic, et eius districtusq.  
penes me fuit receptum quoddam Instrumen-  
tum in eius appria tenoris sequentis. —

Josephus Verges Cultor oriundus a parochia  
S<sup>ti</sup> Laurentij de monte nunch Vero In parochia  
loci de Terradas dios. Gerunden. gratis Confiteor  
et recognosco Vobis Honor Isidro Batlla agricola  
parochia loci de Vila demires dicte dios. Gerunden.  
patri et Soceri, Procuratori q. et actori resp<sup>ct</sup>u  
Mathei Batlla y Puig, et Victoria Puig conjugum  
dicti loci de Vila demires presenti et de iudice, et  
mandato dictor<sup>um</sup> conjugum Puig, et de pecunijs  
tamen Vestris proprijs, vt dicitis, soluenti q. dic-  
tis resp<sup>ct</sup>u nominibus deditis et soluitis mihi  
ego q. a Vobis habui et recepi Voluntas in ea om-  
ni moda realiter et de facto In pecunia numera-  
ta In not. et testium Infrascriptorum presentia  
ex vna viginti, septem libra sedum de la





DATE DUE			
<del>OCT 2</del>			
JAN 20 1970			



*Vintage Library Card*



veritat del fet atesa y conuiderada a l'oneguda  
de dits mos manumissos. E legesch la sepultura  
al cos meu fahedora en lo sementiri della Iglesia  
parroquial de dit lloch de vilademires y en lo  
vas de mos predecessors la qual vull y man me sie  
feta a l'oneguda de dits mos manumissos al qual  
vull y man sien y enteeuingan tant Preueres  
quants aporra a dits mos manumissos qui misses  
celebren eo altrament a Nores. Deu preguen per  
la mia anima a quiscun dels quals vull y man sie  
donada la obllacio y Charitat a dits mos ma-  
numissos ben vitta. Item deix per la mia anima  
en dita Iglesia per lo Rector de aquella celebrar  
vull y man una Nouena de Misses baixes a quiscun  
de les quals vull y man sie offert Pa vi y  
llum com se acostuma per la celebracio de les quals  
deix la Charitat acostumada a l'oneguda de dits  
mos manumissos. Item deix y en dita Iglesia  
celebrar vull y man aquells dos officis o sacrificis  
vulgarment dits y anomenats Nouenal y Cap de any



DE LA  
MARINE,

*Du mois d'Août 1681.*

COMMENTÉE ET CONFÉRÉE

SUR

Les anciennes Ordonnances, le Droit Ro-  
main, & les nouveaux Reglemens.

NOUVELLE EDITION.



A PARIS,

Chez la V. SAUGRAIN & PIERRE PRAULT, à l'entrée  
du Quay de Gesvres, du côté du Pont au Change,  
Rue Paradis.

---

M. DCC. LVI.

AVEC APPROBATION ET PRIVILEGE DU ROI.



KEEP THIS  
**TICKET**

★ YOU MAY WIN A PRIZE ★

No. 143875J

25c









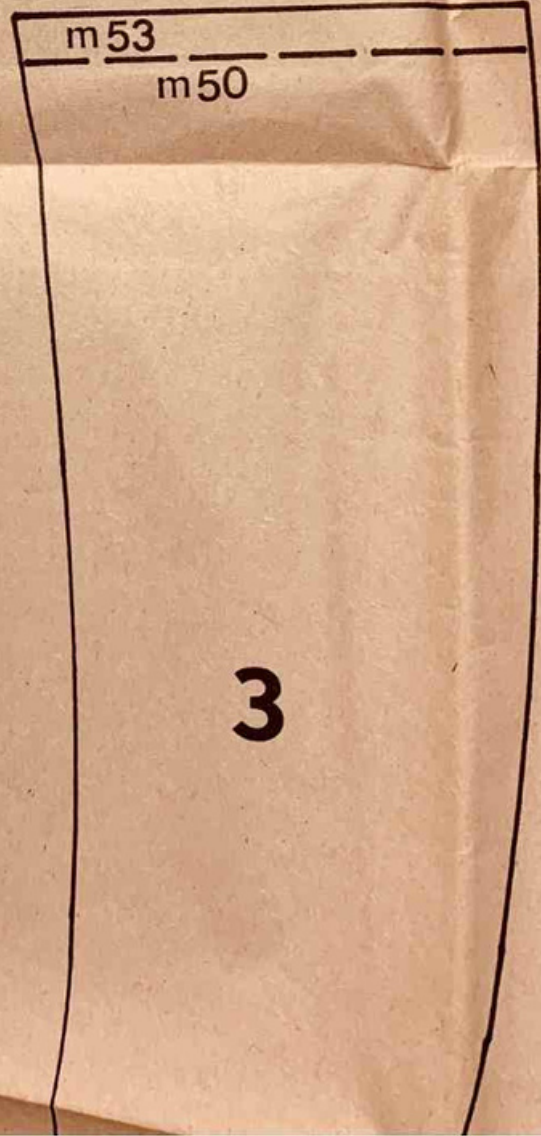






АРХАНГЕЛЪМ МОЮ







Violin  

Banjo

6  

12  

Violin  

Banjo

6  

12  



No. 3

Price, 20c.

chased must be returned within ten days of purchase. All stamps guaranteed genuine. Please do not purchase stamps from this sheet. All prices are strictly net. This sheet.

